

This document will show you how to connect, read (backup) your existing map, write (flash) a new map and perform a TPS reset. This uses the Windows versions, but Mac & Linux versions function the same.

***All types of ECU use the same version of GuzziDiag***

Copy & paste the link into your browser for your operating system:

**Windows:** [http://www.von-der-salierburg.de/download/GuzziDiag/GuzziDiag\\_V0.47.zip](http://www.von-der-salierburg.de/download/GuzziDiag/GuzziDiag_V0.47.zip)

**Linux 32 bit:** [http://www.von-der-salierburg.de/download/GuzziDiag/GuzziDiag\\_V0.47.tgz](http://www.von-der-salierburg.de/download/GuzziDiag/GuzziDiag_V0.47.tgz)

**Linux 64 bit:** [http://www.von-der-salierburg.de/download/GuzziDiag/GuzziDiag\\_V0.47\\_x64.tgz](http://www.von-der-salierburg.de/download/GuzziDiag/GuzziDiag_V0.47_x64.tgz)

**Mac:** [http://www.von-der-salierburg.de/download/GuzziDiag/GuzziDiag\\_V0.47.app.zip](http://www.von-der-salierburg.de/download/GuzziDiag/GuzziDiag_V0.47.app.zip)

For the **5AM ECU**, you will need the following Reader/Writer software from the GuzziDiag page:

**Windows:**

[http://www.von-der-salierburg.de/download/GuzziDiag/IAW5xReader\\_V0.28.zip](http://www.von-der-salierburg.de/download/GuzziDiag/IAW5xReader_V0.28.zip)

[http://www.von-der-salierburg.de/download/GuzziDiag/IAW5xWriter\\_V0.24.zip](http://www.von-der-salierburg.de/download/GuzziDiag/IAW5xWriter_V0.24.zip)

**Linux 32 bit:**

[http://www.von-der-salierburg.de/download/GuzziDiag/IAW5xReader\\_V0.28.tgz](http://www.von-der-salierburg.de/download/GuzziDiag/IAW5xReader_V0.28.tgz)

[http://www.von-der-salierburg.de/download/GuzziDiag/IAW5xWriter\\_V0.24.tgz](http://www.von-der-salierburg.de/download/GuzziDiag/IAW5xWriter_V0.24.tgz)

**Linux 64 bit:**

[http://www.von-der-salierburg.de/download/GuzziDiag/IAW5xReader\\_V0.28\\_x64.tgz](http://www.von-der-salierburg.de/download/GuzziDiag/IAW5xReader_V0.28_x64.tgz)

[http://www.von-der-salierburg.de/download/GuzziDiag/IAW5xWriter\\_V0.24\\_x64.tgz](http://www.von-der-salierburg.de/download/GuzziDiag/IAW5xWriter_V0.24_x64.tgz)

**Mac:**

[http://www.von-der-salierburg.de/download/GuzziDiag/IAW5xReader\\_V0.28.app.zip](http://www.von-der-salierburg.de/download/GuzziDiag/IAW5xReader_V0.28.app.zip)

[http://www.von-der-salierburg.de/download/GuzziDiag/IAW5xWriter\\_V0.24.app.zip](http://www.von-der-salierburg.de/download/GuzziDiag/IAW5xWriter_V0.24.app.zip)

**For the V7 MIU G3:**

**Windows:**

[http://www.von-der-salierburg.de/download/GuzziDiag/IAWMIUG3Reader\\_V0.04.zip](http://www.von-der-salierburg.de/download/GuzziDiag/IAWMIUG3Reader_V0.04.zip)

[http://www.von-der-salierburg.de/download/GuzziDiag/IAWMIUG3Writer\\_V0.3.zip](http://www.von-der-salierburg.de/download/GuzziDiag/IAWMIUG3Writer_V0.3.zip)

**Linux 32 bit:**

[http://www.von-der-salierburg.de/download/GuzziDiag/IAWMIUG3Reader\\_V0.04.tgz](http://www.von-der-salierburg.de/download/GuzziDiag/IAWMIUG3Reader_V0.04.tgz)

[http://www.von-der-salierburg.de/download/GuzziDiag/IAWMIUG3Writer\\_V0.03.tgz](http://www.von-der-salierburg.de/download/GuzziDiag/IAWMIUG3Writer_V0.03.tgz)

**Linux 64 bit:**

[http://www.von-der-salierburg.de/download/GuzziDiag/IAWMIUG3Reader\\_V0.04\\_x64.tgz](http://www.von-der-salierburg.de/download/GuzziDiag/IAWMIUG3Reader_V0.04_x64.tgz)

[http://www.von-der-salierburg.de/download/GuzziDiag/IAWMIUG3Writer\\_V0.03\\_x64.tgz](http://www.von-der-salierburg.de/download/GuzziDiag/IAWMIUG3Writer_V0.03_x64.tgz)

**Mac:**

[http://www.von-der-salierburg.de/download/GuzziDiag/IAWMIUG3Reader\\_V0.04.app.zip](http://www.von-der-salierburg.de/download/GuzziDiag/IAWMIUG3Reader_V0.04.app.zip)

[http://www.von-der-salierburg.de/download/GuzziDiag/IAWMIUG3Writer\\_V0.03.app.zip](http://www.von-der-salierburg.de/download/GuzziDiag/IAWMIUG3Writer_V0.03.app.zip)

Each is a standalone program that works independently of each other and does not require any extra software.

You will also need the two cables. They are available from various resellers on the net. Lonelec is the best source on the net. They sell a kit that includes both cables and is guaranteed to work

Get it here: [http://www.lonelec.co.uk/index.php?main\\_page=product\\_info&cPath=14&products\\_id=50](http://www.lonelec.co.uk/index.php?main_page=product_info&cPath=14&products_id=50)

**Do not use the drivers that come with the cables.** Download the drivers from here:

**Windows:** <http://www.ftdichip.com/Drivers/CDM/CDM%202.08.30%20WHQL%20Certified.zip>

**Mac:** [http://www.ftdichip.com/Drivers/VCP/MacOSX/FTDIUSBSerialDriver\\_v2\\_3.dmg](http://www.ftdichip.com/Drivers/VCP/MacOSX/FTDIUSBSerialDriver_v2_3.dmg)

Linux doesn't require drivers.

1. The OBD2 KKL 16 pin to USB cable with the FTDI chip.



## 2. The Fiat 3 Pin to 16 pin Adapter



To connect to the bike, connect the two 16 pin connectors on the cables together and the 3 pin cable to the diagnostic port. For example on the GRiSO, it's located under the seat near the back right.



Attach the clips from the 3 pin cable to the battery (take note of polarity) and plug the USB cable into a USB port on your computer.

A LED on the OBD2 cable will indicate power is connected.



### **Saving your map:**

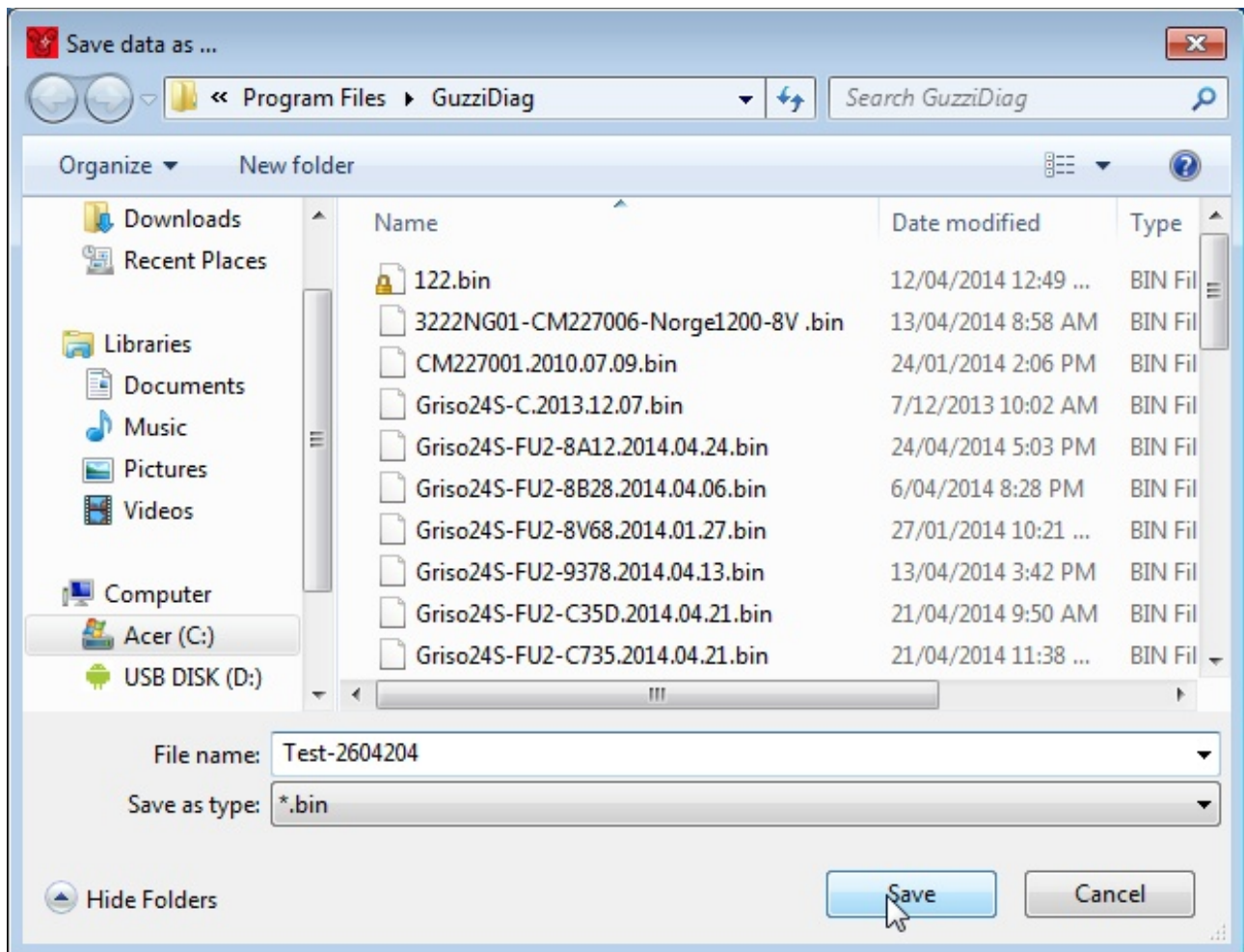
To read and backup your existing map, open the IAW5xReader. Your computer may have multiple COM ports, so select the correct one from the drop-down box. it is usually the last one or highest number. if it doesn't connect at first, keep trying different ports. In my example, I only have one, COM4.



Then, click on 'read'

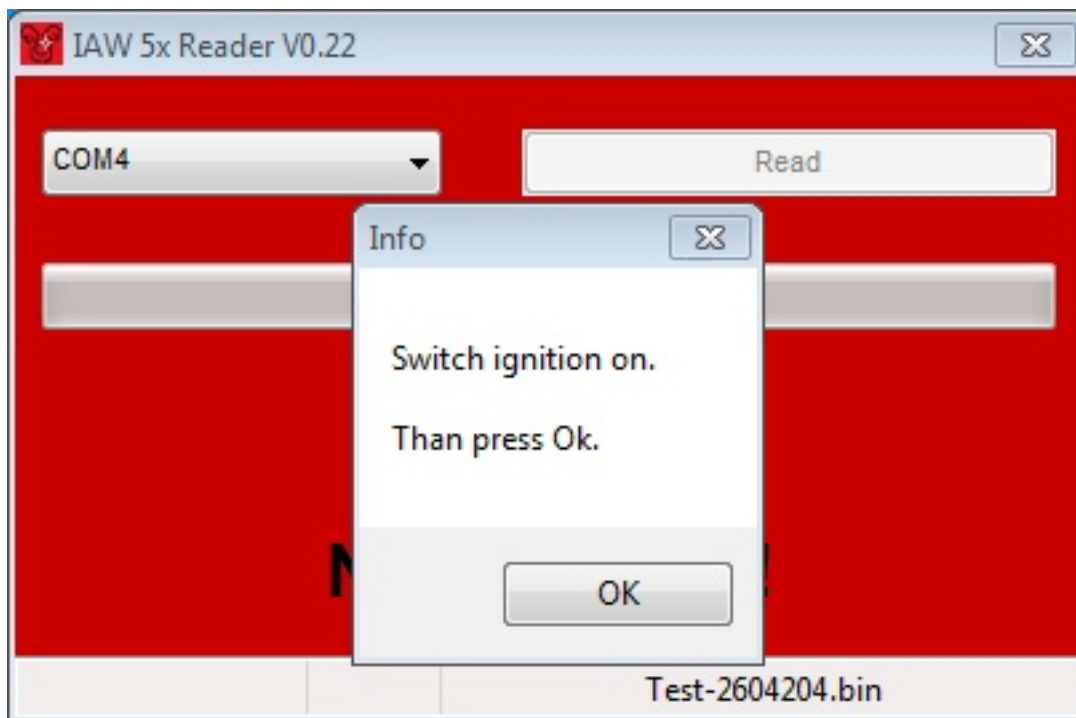


A dialog box will open, and here you can select the folder where you want to save the .bin file. You can name it anything you like.

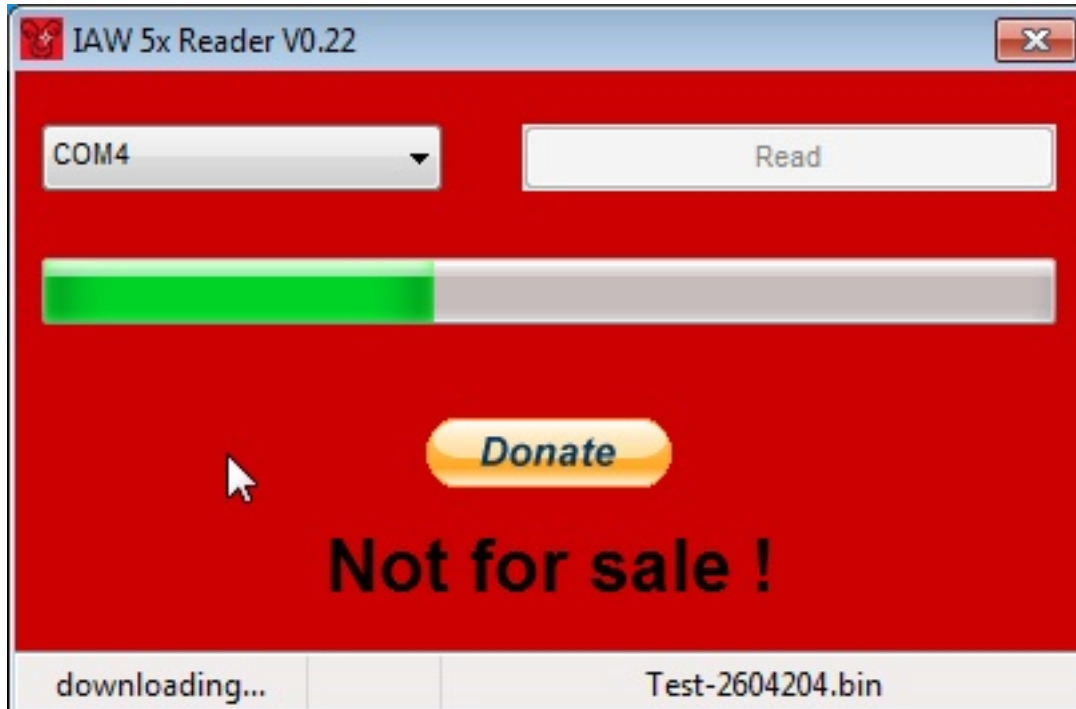




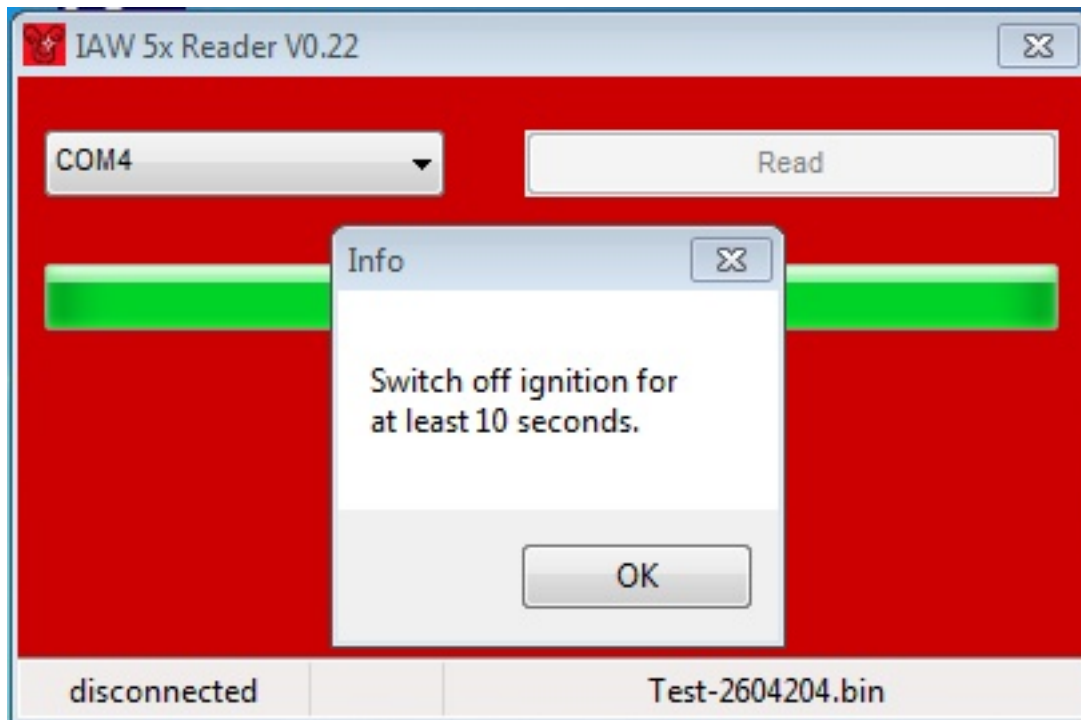
Click 'save'. You will then get:



Turn your keyswitch to 'on'. Do not start the engine. Reader will start downloading. It will take 15 minutes to backup the map.



When it has finished, it will ask you to switch off your keyswitch.



You have successfully saved your current map.

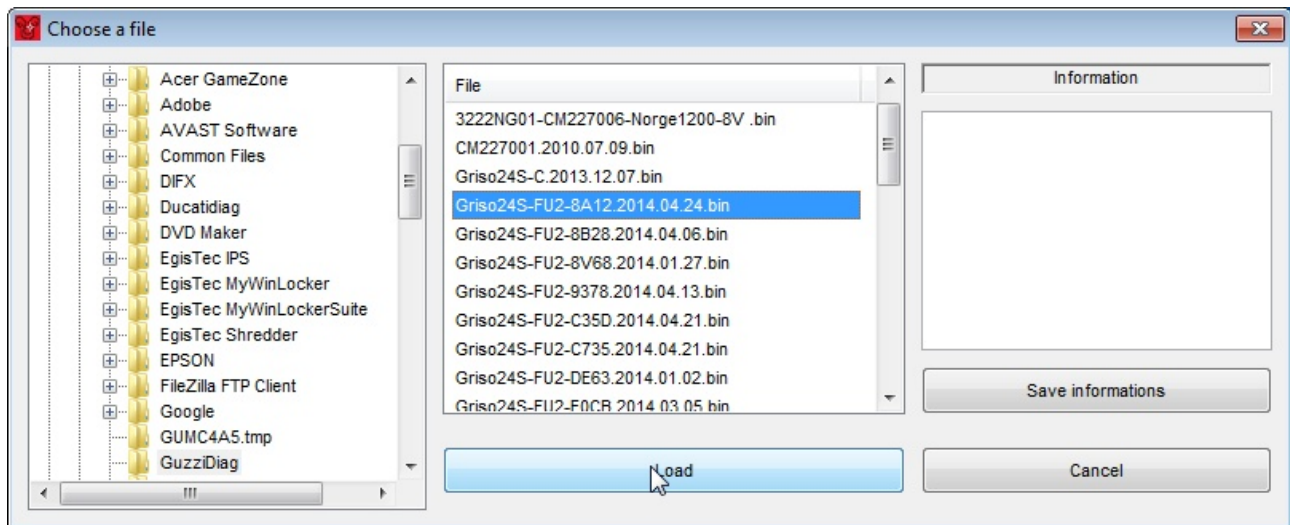
#### **Writing a new map.**

To write or flash a new map, start the Writer program. You can select your COM port here as well.





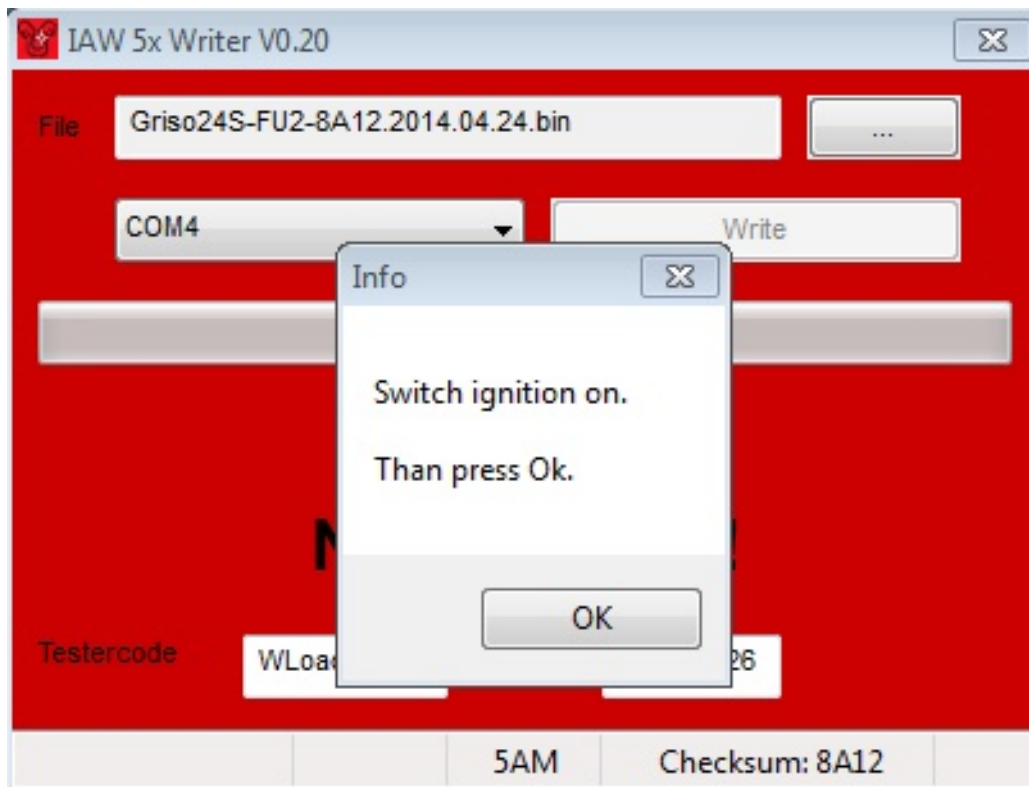
Click on the button with the 3 dots, and you will get a dialog box where you can browse to and select the .bin file you wish to flash by clicking 'Load'.



Then, click 'Write' Note: In the bottom right-hand corner is the checksum of the bin file. If I send you a map, it will have the checksum as part of the file name. If it is different, do not flash it.

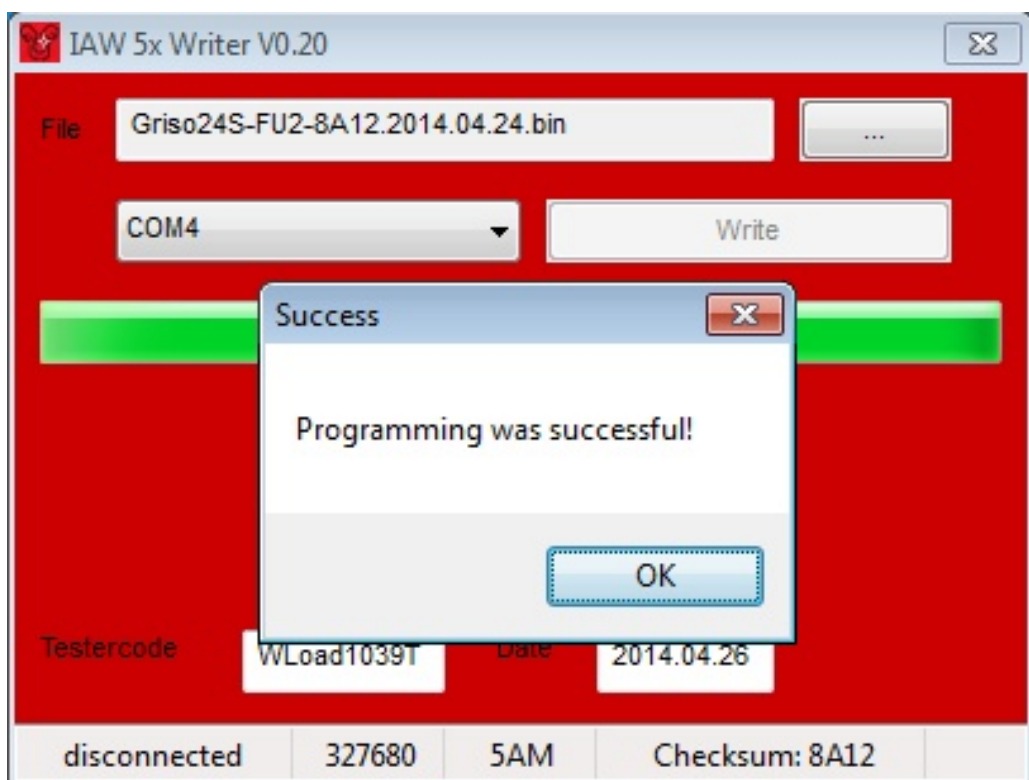


You will be asked to switch on your keyswitch again.



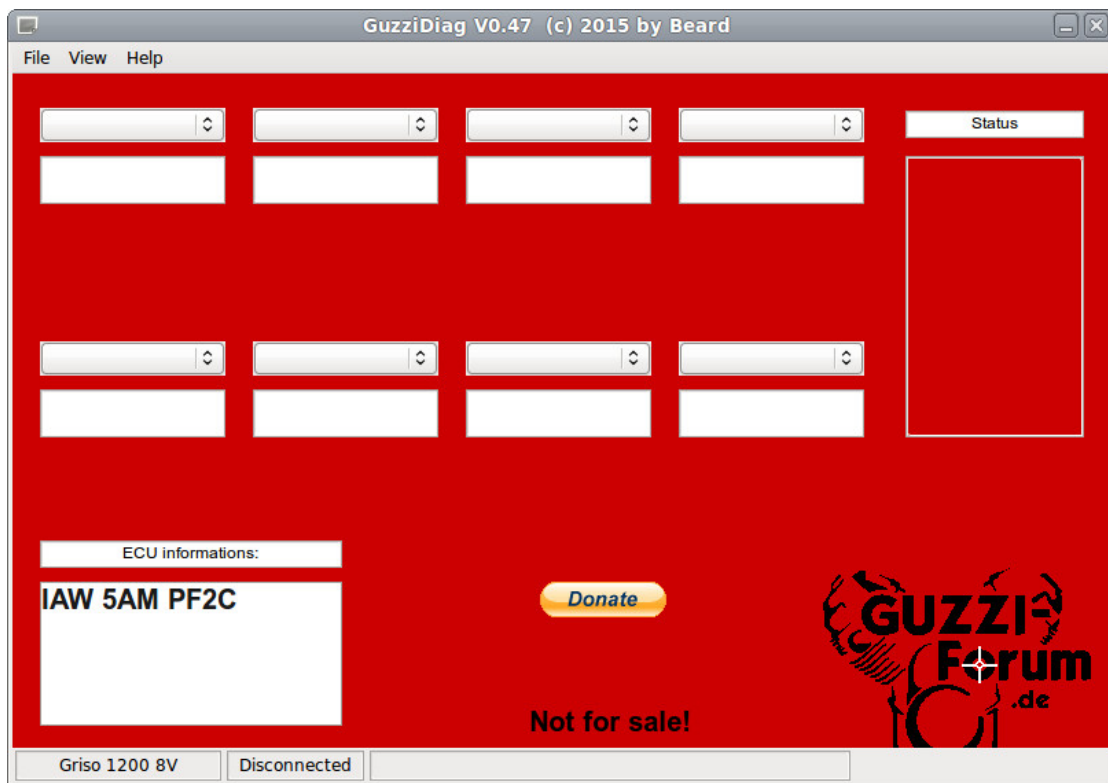
It will start the upload. It takes 3 - 5 minutes. It will then change to 'programming' as it writes the file to the ECU.

It will confirm programming was successful. Click 'OK' and switch off your keyswitch.  
Here's a little video of a map upload: <http://youtu.be/ZAi1N3ZFhHA>



## Reset your TPS

For the V7, see MIU G3 section on page 24. For CARC bikes, you will then need to reset your TPS and autolearning parameters. Open the GuzziDiag program.



Click 'File' -> 'Preferences' to configure the software. It only needs to be done once.

The GuzziDiag settings dialog box opens. Here you can select language, COM port and bike type. Click the X to close, when done.



Next we want to connect to the ECU, so click 'File' -> 'Connect'



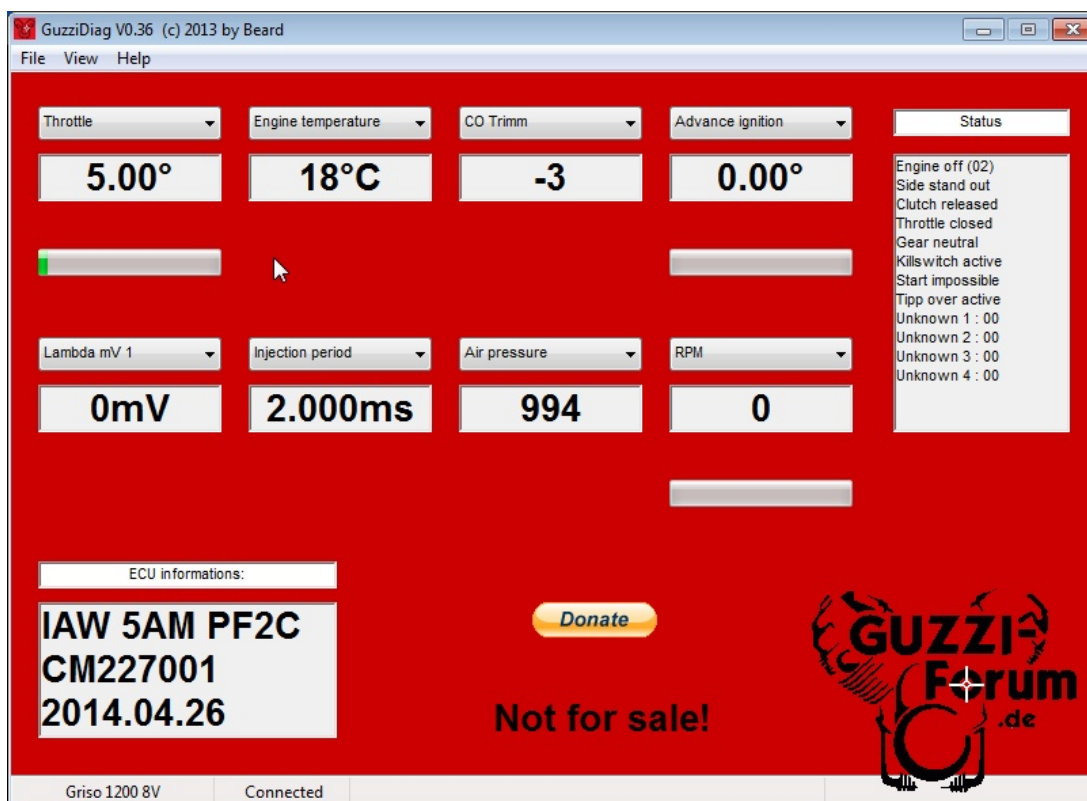
It will ask you to switch on your keyswitch and click 'OK'



You'll notice there are 8 drop down boxes to select various readouts. Select whatever you wish. You Should make sure one of the drop-downs selected is 'Throttle'.



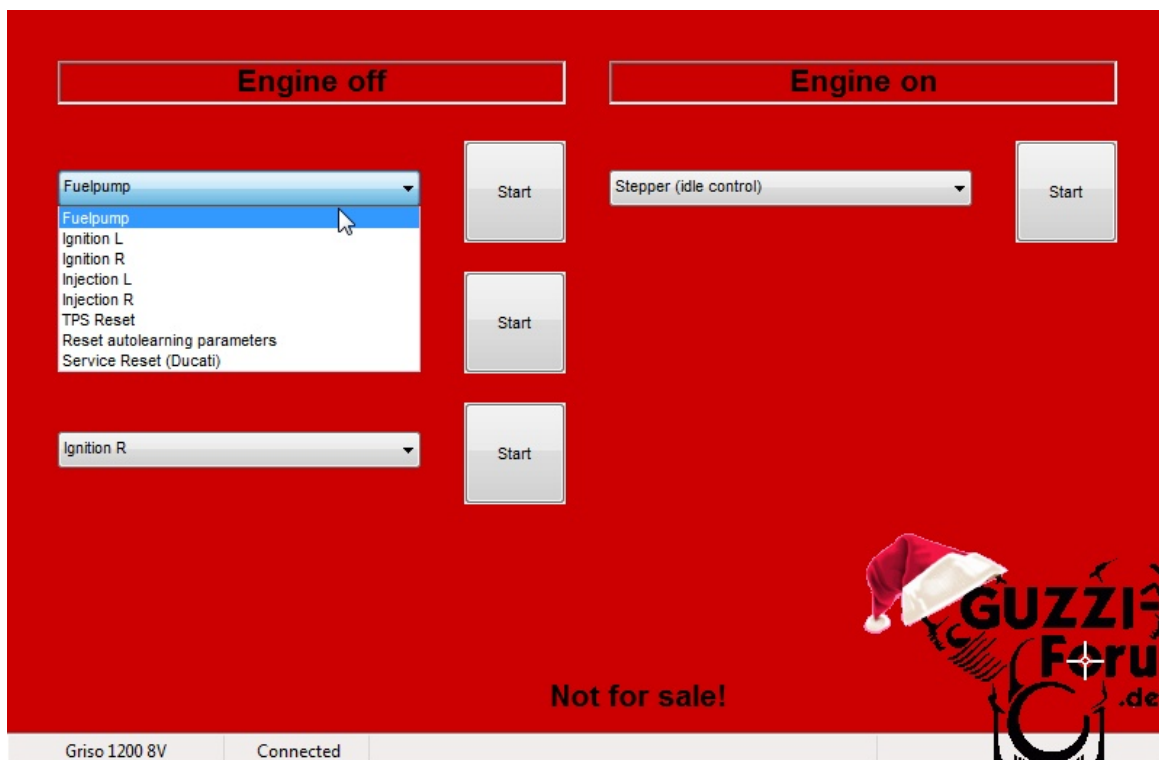
You can see here after uploading the map, my TPS (Throttle) is slightly out. It should read about 4.7



Let's reset it! Click on 'View' -> 'Actors'  
You will see the 'Actors' menu.

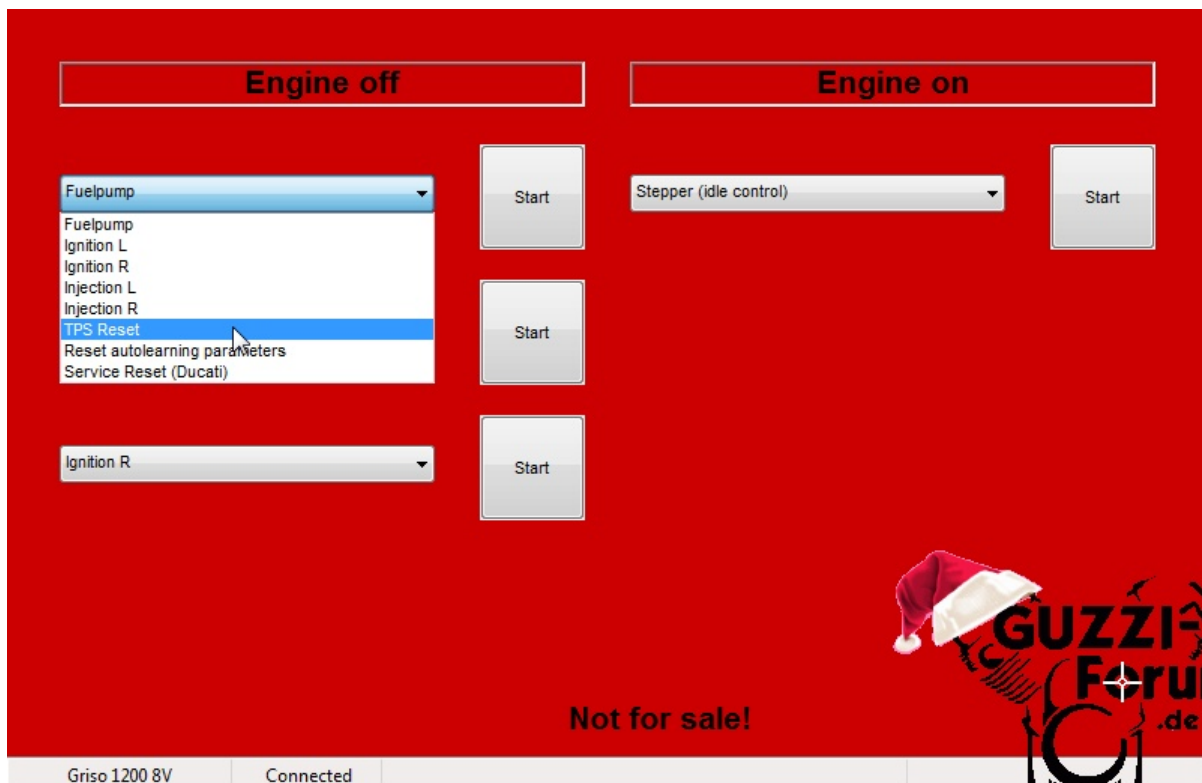


Next, click on one of the drop-down selection boxes under 'Engine Off'





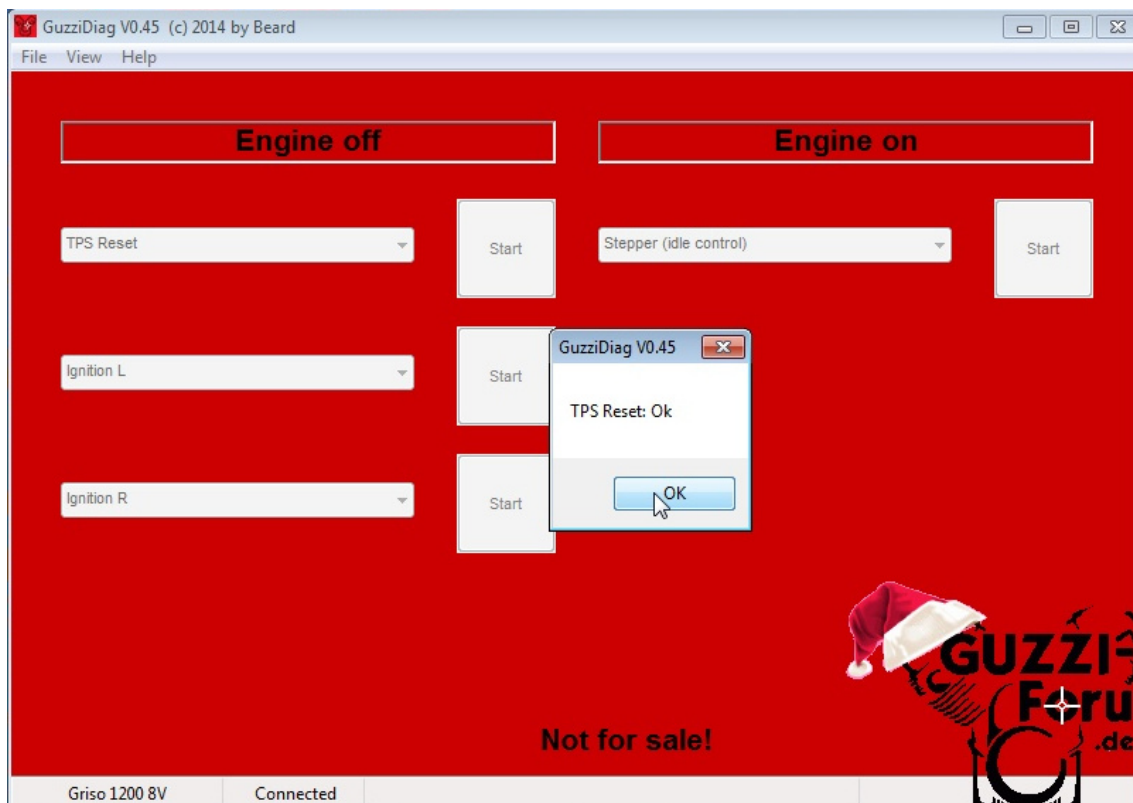
Select TPS Reset



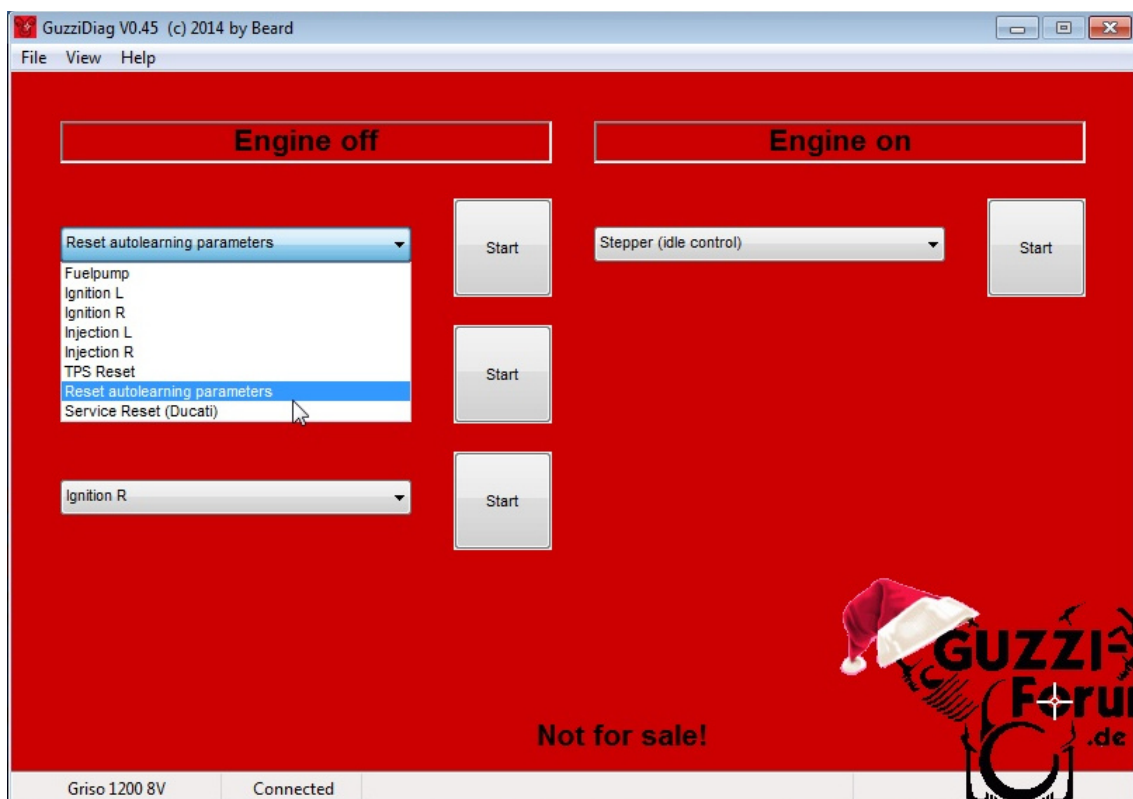
Click 'Start'



You'll get the TPS Reset OK dialog. Click OK.



To reset the Autolearning parameters (ECU fuel trims), using the drop-down selection box, select 'Reset autolearning parameters', then click 'Start'.



Done! Go ride!

**For the V7 with MIU G3 ECU:**

In 'Measurements', check the reading for 'Throttle'. For V7 It should be 0.9 - 1.0, for V7-II 1.0 - 1.2.  
If the reading is anything outside that range, follow these steps:

- 1) In the top menu, go to View -> Actors
- 2) In any of the drop down menus select "Throttle self-learning", then click start.
- 3) In the top menu, go back to View -> Measurements
- 4) Check the "Throttle" value. It should now be in the correct range.

You must also reset the autolearning parameters.